

STERLCO**STEAM
CONTROL
PRODUCTS****BOILER FEED UNITS
4100-GF SERIES**

Bulletin 735-G



Model 4128-GDF

Features

- 3/16" heavy gauge steel receivers
- Simplex or duplex construction
- Bronze fitted centrifugal pumps
- Energy efficient 3450 RPM motors
- Automatic venting
- "Sterl-Seal"[™] ceramic pump seal
- Heavy-duty make-up water valve
- Wide range of options and accessories

Special Options

- Isolation valves
- Hot-dipped galvanized receivers
- Electric alternator for duplex units
- Thermometer
- Solenoid operated make-up water valve with reverse acting float switch
- Special motor construction, such as totally enclosed and explosion proof, is available
- Magnetic starters with H-O-A selector switches
- 1750 RPM motors, larger pumping capacities and higher discharge pressures – consult factory

• NEMA 12 CONTROL PANEL

Panel includes: circuit breaker or fused disconnect switch with cover interlock, magnetic motor starter with three overloads, control transformer, pilot light and H-O-A switch...all completely assembled and wired to the terminal block.

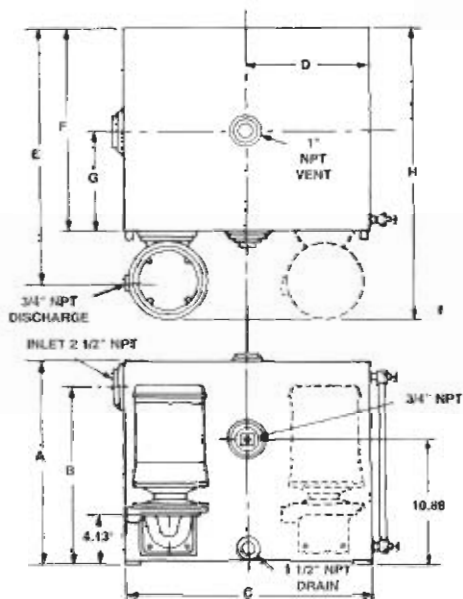
4100-GF Series *Engineering And Capacity Data*

BOILER HP	DISCHARGE PRESSURE PSI	PUMP CAPACITY GPM	MOTOR HP	REC. CAP. GAL.	UNIT MODEL NO.		SHIPPING WT. LBS.	
					SIMPLEX	DUPLEX	SIMPLEX	DUPLEX
15	20	3	1/3	30	4122-GF	4122-GDF	200	240
30	20	6	1/3	30	4124-GF	4124-GDF	200	240
45	20	9	1/3	45	4126-GF	4126-GDF	240	280
60	20	12	1/3	60	4128-GF	4128-GDF	275	335
75	20	15	1/2	95	41210-GF	41210-GDF	360	420
100	20	20	1/2	95	41215-GF	41215-GDF	360	420
150	20	30	3/4	120	41220-GF	41220-GDF	415	475

Sample Specification

Furnish and install, where indicated on plans, a Sterling **4100-GF Series** (simplex or duplex) boiler feed unit(s). Each pump shall deliver _____ GPM at a discharge pressure of _____ psig. The unit(s) shall be factory assembled and tested by the pump manufacturer and shall include a receiver, pump(s), make-up water valve, gauge glass and accessories.

The receiver shall have a capacity of _____ gallons and be of minimum 3/16" steel construction. Pump(s) shall be of the centrifugal type with two-piece enclosed brass impeller, cast iron housing, high temperature (250°F) mechanical seal and stainless steel motor shaft. The make-up water valve is to be a mechanical, plug-type with a stainless steel float. A flat perforated brass strainer shall be provided in the inlet to the pump from the tank. The motor(s) shall be vertical, 3450 RPM, _____ phase, _____ volt, 60 cycle, _____ H.P.



4100-GF SERIES *Dimensions*

Rec. Size Gal.	A	B	C	D	E	F	G	H
30	18.38	16.13	22	11	23.5	18	9	28
45	26.38	24.13	22	11	23.5	18	9	28
60	28.38	26.13	28	14	23.5	18	9	28
95	28.38	26.13	28	14	33.5	28	14	38
120	36.38	33.75	28	14	33.5	28	14	38

