



MARSHALL ENGINEERED PRODUCTS CO.

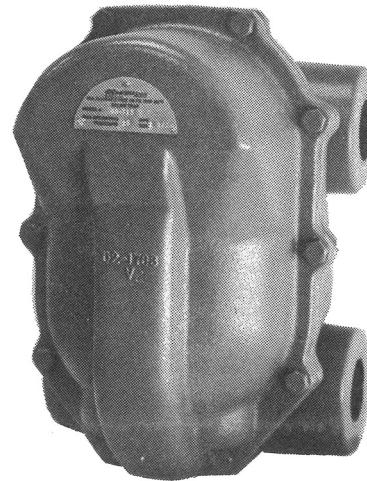
SPECIALTIES

Float and Thermostatic Trap - Series 46 & 48

APPLICATION

The **MEPCO** Series 46 & 48, Float & Thermostatic Traps are applicable to all types of steam heating systems and steam process equipment that produce exceptionally large amounts of condensate. These traps operate efficiently for low, medium & high pressure applications. Their purpose is to discharge air and condensate while preventing steam from entering the return piping.

These traps are manufactured in two sizes (1-1/2" & 2") for handling capacities of 425 to 24,000 lbs. of condensate per hour. Four (4) possible connections allow a greater flexibility in piping.



Series 46 & 48 Float & Thermostatic Trap (Double Inlet/Outlet with Stainless Steel Internals)

FEATURES & BENEFITS

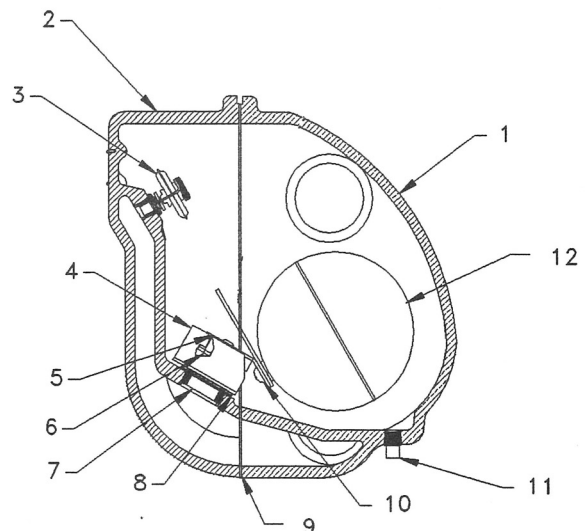
- 1. Heavy duty construction throughout.** Body and cover are rugged cast iron; all working parts are made of non-corrosive metals especially adapted for this service.
- 2. Instantaneous valve action.** Design of the float valve assembly permits rapid and positive valve action. Location of the valve assures a deep water seal at all times.

MEPCO reserves the right to make changes in specifications and design without notice.

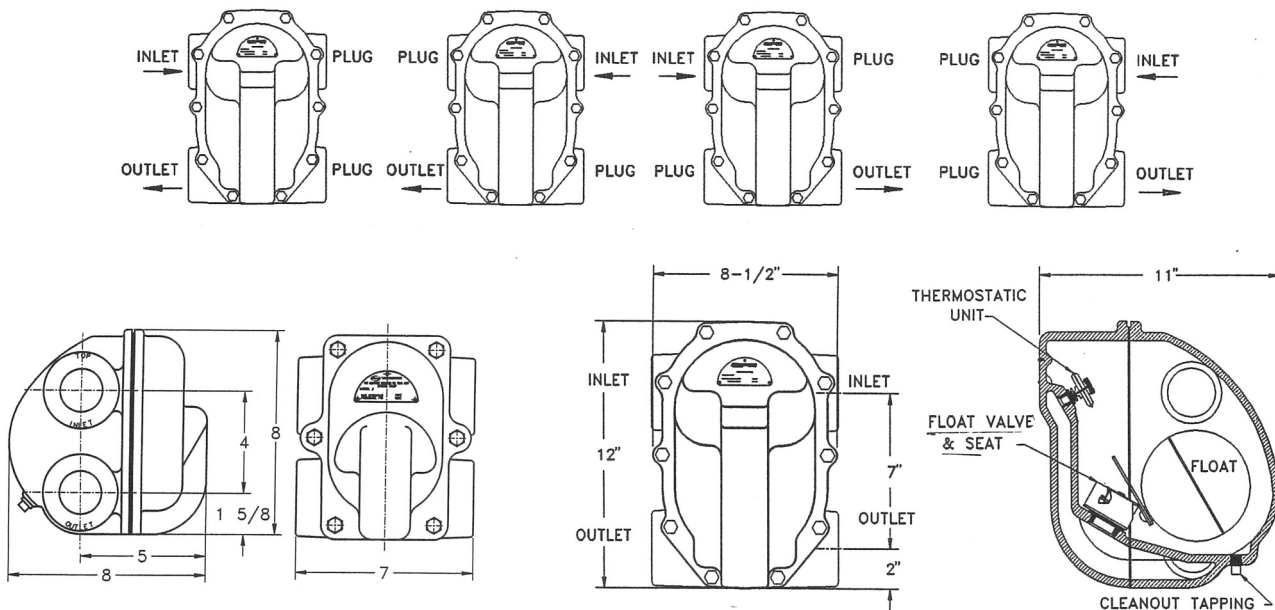
PARTS/MATERIALS - 46 & 48 series trap (48 series shown in picture)

ITEM	PART	MATERIAL
1	Body	Cast Iron
2	Cap	Cast Iron
3	Thermal Element	Stainless Steel & Brass
4	Bracket	Stainless Steel
5	Lever	Stainless Steel
6	Valve	Stainless Steel
7	Seat	Stainless Steel
8	Gasket	Cellulose, Aramid Fiber
9	Gasket	Cellulose, Aramid Fiber
10	Washer & Screw	Stainless Steel
11	Plug 1/4" NPT	Steel (Grade 2)
12	Float	Stainless Steel

- 3. Continuous rapid flow of condensate.** A lever operated discharge valve opens wide so that large volumes of condensate can flow continuously from trap. Increased full flooded condensate capacity with quick and positive action is assured by the float mechanisms double fulcrum design.
- 4. Minimum maintenance.** All working parts may be inspected, removed or repaired without disturbing piping connections. Clean-out plug at bottom of trap body permits easy flushing.



Dimensions and Capacities



SERIES 46 F & T TRAP - WGT. 24 lbs.

SERIES 48 F & T TRAP - WGT. 48 LBS.

Capacities

MODEL NO.	46-715 46-815	48-715 48-815	46-730 46-830	48-730 48-830	46-775 46-875	48-775 48-875	46-7125 46-8125	48-7125 48-8125	
NPT SIZE	1-1/2" 2"		1-1/2" 2"		1-1/2" 2"		1-1/2" 2"		
ORIFICE SIZE	.625	1.032	.500	.762	.312	.500	.250	.328	
PRESSURE DIFFERENTIAL PSI	1/4	2700	6400	1500	2575	600	1500	425	625
	1/2	3000	7500	2750	4500	825	2750	600	825
	1	4000	9300	3500	5650	1000	3500	750	1100
	2	5000	13000	4750	8750	1225	4750	900	1550
	5	7500	16500	6300	11800	1575	6300	1250	2100
	10	10000	21000	7750	14500	1875	7750	1600	3000
	15	11750	24000	9250	17500	2175	9250	1750	3500
	20	THIS MODEL NUMBER TRAP IS NOT APPLICABLE BEYOND THIS PRESSURE DIFFERENTIAL		10500	19500	2500	10500	2100	3900
	25			11500	20600	2750	11500	2250	4200
	30			12500	21600	3000	12500	2500	4400
	40					3500	13500	2750	5000
	50					4000	14500	3000	5500
	60			4500	15500	3250	6250		
	75			5000	17000	3600	6750		
	90						3900	7500	
100						4100	7750		
125						4500	8700		

Capacities given are continuous discharge capacities in pounds of condensate per hour at pressure differential indicated, determined by tests conducted according to ASME Performance test Code 39.1-1980. Apply Safety Factor as required per application. Condensate within 5 degrees of steam temperature.

MARSHALL ENGINEERED PRODUCTS CO.

3056 Walker Ridge Drive, Suite C, Grand Rapids, Michigan 49544
Phone 616.246.1431 Fax 616.246.1445 www.mepcollc.com