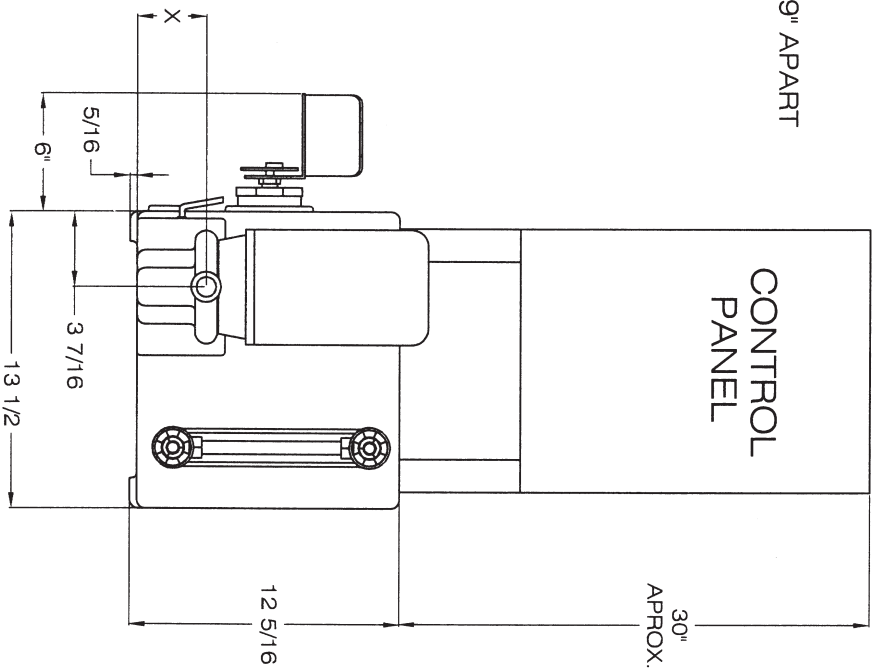
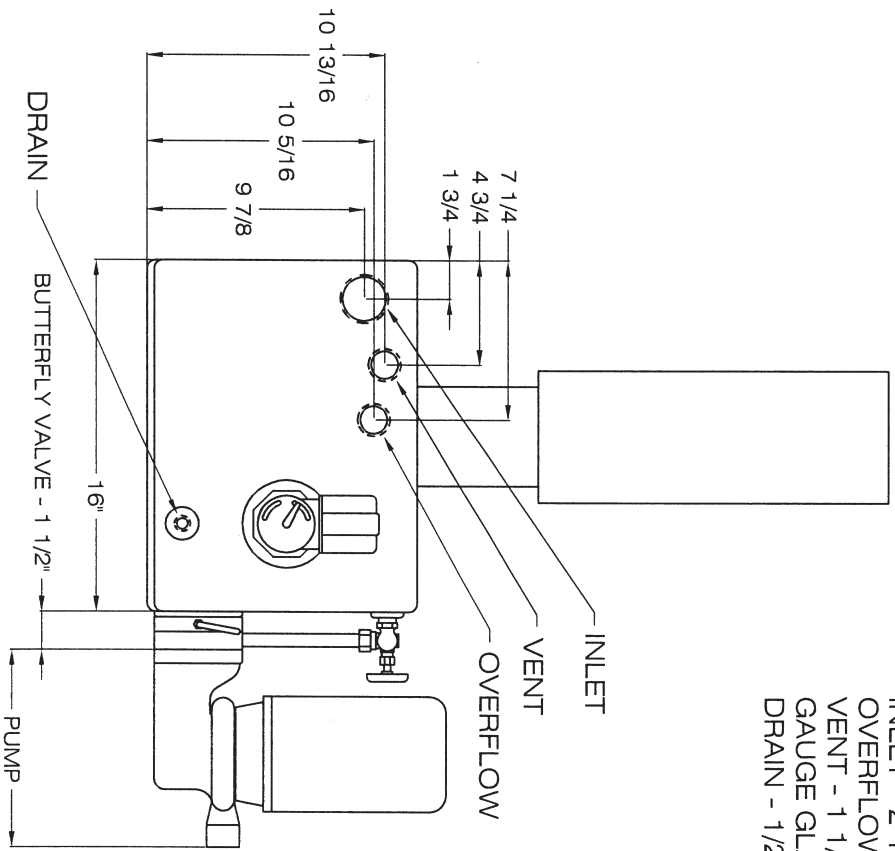
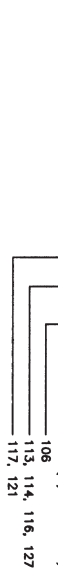
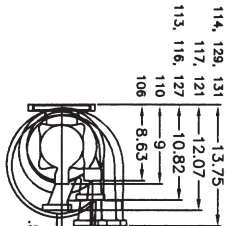


INLET - 2" N.P.T.  
 OVERFLOW - 1 1/4" N.P.T.  
 VENT - 1 1/4" N.P.T.  
 GAUGE GLASS FITTINGS - 9" APART  
 DRAIN - 1/2" N.P.T.



BUTTERFLY VALVE SIZE	DIM. "A"
3	1 1/2"
4	2"

RECOMMENDED DISCHARGE NOZZLE SIZE CAPACITY CHART	NOZZLE SIZE
0-15	3/4"
16-60	1" OR 1 1/2"
61-113	2"
114-150	2 1/2"
151-250	3"
251-400	4"



"X" DIMENSION		PUMP MODELS	
110	106	113, 116 & 127	117 & 121
114 & 129	114 & 129	UNDER 130 GPM	130 GPM & OVER
3.13	3.31	4.19	3.82
		4.50	6.32
			7.00

**TYPE ECC & DC & PC FLOOR-MOUNTED 10 GAL. C.L. REC.**



MANUFACTURED BY  
**SHIPCO PUMPS**  
 SHIPPENSBURG PUMP COMPANY INC.  
 P.O. Box 279 Shippensburg, Pa. 17257  
 PHONE 717 532-7321 / FAX 717 532-7704  
 WWW.SHIPCO PUMPS.COM  
 SHIPCO® IS A REGISTERED TRADEMARK OF SHIPPENSBURG PUMP CO., INC.

DRAWN BY: A. DAMORE  
 DATE: 3/04  
 REVISION: .6  
 DIMENSION PRINT: 40031