

**SHIPCO<sup>®</sup>**  
**SPUMPS**

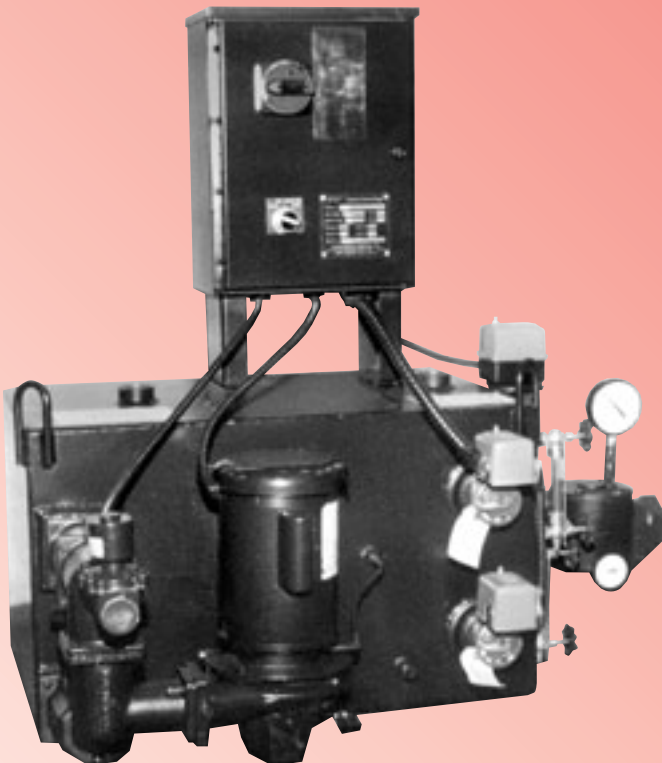
SHIPPENSBURG PUMP CO., INC.  
P.O. BOX 279, SHIPPENSBURG, PA 17257  
PHONE 717-532-7321 • FAX 717-532-7704  
WWW.SHIPCOPUMPS.COM

**PRIDE**

**QUALITY**

**CRAFTSMANSHIP**

**BULLETIN 150**  
*Revised 8/02*



## **TYPE LRV-S**

**Low Return Vacuum Pumps  
with 1/4" Tk. Black  
Steel Receivers**

Our Multi-Jet Design is an effective  
and reliable means of Removing  
Air and Lifting Condensate.

Our Pumps are efficient, quiet,  
and dependable.

Capacities from 2,500 sq. ft. EDR to  
65,000 sq. ft. EDR

**SHIPCO<sup>®</sup>**  
**SPUMPS** are equipped with Mechanical Seals rated for temperatures  
up to 250°F as standard.  
Higher temperature seals and special faces available upon request.

# LRV-S Units

**LOW RETURN VACUUM UNITS** are designed to produce a vacuum and pump condensate by means of a centrifugal pump and a nozzle venturi arrangement.

The receiver is divided into two compartments; the lower section is used as a condensate collection area. This section is under the same vacuum as the return lines in the system. The condensate is collected here and lifted by a vacuum lift to the upper compartment. The float switch in the lower compartment acti-

vates the centrifugal pump and causes a vacuum to be produced with the nozzle venturi arrangement and lifts the condensate to the upper compartment.

The upper section of the receiver is used to recycle the condensate and produce a vacuum, until such time as this section reaches a level, causing the float switch here to activate the discharge valve and pump, sending the condensate on to the boiler.

CAP. SQ. FT. EDR	GPM WATER ONLY	RATING AT 5-1/2" HG VACUUM AT 160° F SIMULTANEOUS		PUMP DISCH. SIZE, INCHES	PUMP DISCH. PRESS. PSIG	MOTOR HP		PHASE	SINGLE MODEL NO.	DUPEX MODEL NO.
		WATER GPM	AIR CFM			3500 RPM	1750 RPM			
Up to 5,000	7-1/2	7	3	1-1/4"	20	3/4		1	5 LRV S1-20-351	5 LRV S2-20-351
					20	3/4		3	5 LRV S1-20-353	5 LRV S2-20-353
					20		1	1	5 LRV S1-20-171	5 LRV S2-20-171
					20		1	3	5 LRV S1-20-173	5 LRV S2-20-173
					30	1		1	5 LRV S1-30-351	5 LRV S2-30-351
					30	1		3	5 LRV S1-30-353	5 LRV S2-30-353
					30		1-1/2	3	5 LRV S1-30-173	5 LRV S2-30-173
					40	1-1/2		1	5 LRV S1-40-351	5 LRV S2-40-351
					40	1-1/2		3	5 LRV S1-40-353	5 LRV S2-40-353
5,000 to 10,000	15	14	6	1-1/4"	20	1		1	10 LRV S1-20-351	10 LRV S2-20-351
					20	1		3	10 LRV S1-20-353	10 LRV S2-20-353
					20		1-1/2	3	10 LRV S1-20-173	10 LRV S2-20-173
					30	1-1/2		1	10 LRV S1-30-351	10 LRV S2-30-351
					30	1-1/2		3	10 LRV S1-30-353	10 LRV S2-30-353
					30		2	3	10 LRV S1-30-173	10 LRV S2-30-173
					40	2		3	10 LRV S1-40-353	10 LRV S2-40-353
10,000 to 15,000	22-1/2	21	9	1-1/4"	20	1-1/2		1	15 LRV S1-20-351	15 LRV S2-20-351
					20	1-1/2		3	15 LRV S1-20-353	15 LRV S2-20-353
					20		2	3	15 LRV S1-20-173	15 LRV S2-20-173
					30	2		3	15 LRV S1-30-353	15 LRV S2-30-353
					30		3	3	15 LRV S1-30-173	15 LRV S2-30-173
					40	3		3	15 LRV S1-40-353	15 LRV S2-40-353
15,000 to 20,000	30	28	11	1-1/2"	20	2		3	20 LRV S1-20-353	20 LRV S2-20-353
					20		2	3	20 LRV S1-20-173	20 LRV S2-20-173
					30	3		3	20 LRV S1-30-353	20 LRV S2-30-353
					30		3	3	20 LRV S1-30-173	20 LRV S2-30-173
					40	3		3	20 LRV S1-40-353	20 LRV S2-40-353
20,000 to 25,000	37-1/2	35	14	1-1/2"	20	3		3	25 LRV S1-20-353	25 LRV S2-20-353
					20		3	3	25 LRV S1-20-173	25 LRV S2-20-173
					30	5		3	25 LRV S1-30-353	25 LRV S2-30-353
					30		5	3	25 LRV S1-30-173	25 LRV S2-30-173
					40	5		3	25 LRV S1-40-353	25 LRV S2-40-353
					40		5	3	25 LRV S1-40-173	25 LRV S2-40-173
25,000 to 30,000	45	42	17	1-1/2"	20	3		3	30 LRV S1-20-353	30 LRV S2-20-353
					20		3	3	30 LRV S1-20-173	30 LRV S2-20-173
					30	5		3	30 LRV S1-30-353	30 LRV S2-30-353
					30		5	3	30 LRV S1-30-173	30 LRV S2-30-173
					40	5		3	30 LRV S1-40-353	30 LRV S2-40-353
					40		5	3	30 LRV S1-40-173	30 LRV S2-40-173
30,000 to 40,000	60	56	21	2"	20	3		3	40 LRV S1-20-353	40 LRV S2-20-353
					20		5	3	40 LRV S1-20-173	40 LRV S2-20-173
					30	5		3	40 LRV S1-30-353	40 LRV S2-30-353
					30		5	3	40 LRV S1-30-173	40 LRV S2-30-173
40,000 to 65,000	97-1/2	65	22	2"	20		5	3	65 LRV S1-20-173	65 LRV S2-20-173
					30		7-1/2	3	65 LRV S1-30-173	65 LRV S2-30-173