

SHIPCO[®]
PUMPS

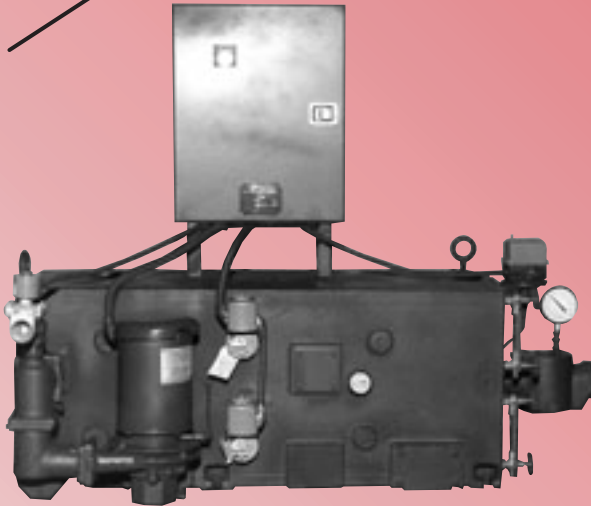
SHIPPENSBURG PUMP CO., INC.
P.O. BOX 279, SHIPPENSBURG, PA 17257
PHONE 717-532-7321 • FAX 717-532-7704
WWW.SHIPCOPUMPS.COM

PRIDE

QUALITY

CRAFTSMANSHIP

BULLETIN 118
Revised 5/06



TYPE LRV

**Low Return Vacuum Pumps
with Cast Iron Receivers**

Our Multi-Jet Design is an effective
and reliable means of Removing
Air and Lifting Condensate.

Our Pumps are efficient, quiet,
and dependable.

Capacities from 2,500 sq. ft. EDR to
65,000 sq. ft. EDR



SHIPCO[®] PUMPS are equipped with Mechanical Seals rated for temperatures
up to 250°F as standard.
Higher temperature seals and special faces available upon request.

LRV Units

LOW RETURN VACUUM UNITS are designed to produce a vacuum and pump condensate by means of a centrifugal pump and a nozzle venturi arrangement.

The receiver is divided into two compartments; the lower section is used as a condensate collection area. This section is under the same vacuum as the return lines in the system. The condensate is collected here and lifted by a vacuum lift to the upper compartment. The float switch in the

lower compartment activates the centrifugal pump and causes a vacuum to be produced with the nozzle venturi arrangement and lifts the condensate to the upper compartment.

The upper section of the receiver is used to recycle the condensate and produce a vacuum, until such time as this section reaches a level, causing the float switch here to activate the discharge valve and pump, sending the condensate on to the boiler.

Quick Selection table for USUAL System Conditions — Based on EDR

CAP. SQ. FT. EDR	GPM WATER ONLY	RATING AT 5-1/2" HG VACUUM AT 160° F SIMULTANEOUS		PUMP DISCH. SIZE, INCHES	PUMP DISCH. PRESS. PSIG	MOTOR HP		PHASE	SINGLE MODEL NO.	DUPLEX MODEL NO.					
		WATER GPM	AIR CFM			3500 RPM	1750 RPM								
Up to 5,000	7-1/2	7	3	1-1/4"	20	3/4		1	5 LRV1-20-351	5 LRV2-20-351					
					20	3/4		3	5 LRV1-20-353	5 LRV2-20-353					
					20		1	1	5 LRV1-20-171	5 LRV2-20-171					
					20		1	3	5 LRV1-20-173	5 LRV2-20-173					
					30	1		1	5 LRV1-30-351	5 LRV2-30-351					
					30	1		3	5 LRV1-30-353	5 LRV2-30-353					
					30		1-1/2	3	5 LRV1-30-173	5 LRV2-30-173					
					40	1-1/2		1	5 LRV1-40-351	5 LRV2-40-351					
					40	1-1/2		3	5 LRV1-40-353	5 LRV2-40-353					
					5,000 to 10,000	15	14	6	1-1/4"	20	1		1	10 LRV1-20-351	10 LRV2-20-351
20	1		3	10 LRV1-20-353						10 LRV2-20-353					
20		1-1/2	3	10 LRV1-20-173						10 LRV2-20-173					
30	1-1/2		1	10 LRV1-30-351						10 LRV2-30-351					
30	1-1/2		3	10 LRV1-30-353						10 LRV2-30-353					
30		2	3	10 LRV1-30-173						10 LRV2-30-173					
40	2		3	10 LRV1-40-353						10 LRV2-40-353					
10,000 to 15,000	22-1/2	21	9	1-1/4"						20	1-1/2		1	15 LRV1-20-351	15 LRV2-20-351
					20	1-1/2		3	15 LRV1-20-353	15 LRV2-20-353					
					20		2	3	15 LRV1-20-173	15 LRV2-20-173					
					30	2		3	15 LRV1-30-353	15 LRV2-30-353					
					30		3	3	15 LRV1-30-173	15 LRV2-30-173					
					40	3		3	15 LRV1-40-353	15 LRV2-40-353					
					15,000 to 20,000	30	28	11	1-1/2"	20	2		3	20 LRV1-20-353	20 LRV2-20-353
										20		2	3	20 LRV1-20-173	20 LRV2-20-173
30	3		3	20 LRV1-30-353						20 LRV2-30-353					
30		3	3	20 LRV1-30-173						20 LRV2-30-173					
40	3		3	20 LRV1-40-353						20 LRV2-40-353					
20,000 to 25,000	37-1/2	35	14	1-1/2"						20	3		3	25 LRV1-20-353	25 LRV2-20-353
										20		3	3	25 LRV1-20-173	25 LRV2-20-173
										30	5		3	25 LRV1-30-353	25 LRV2-30-353
					30		5	3	25 LRV1-30-173	25 LRV2-30-173					
					40	5		3	25 LRV1-40-353	25 LRV2-40-353					
					40		5	3	25 LRV1-40-173	25 LRV2-40-173					
					25,000 to 30,000	45	42	17	1-1/2"	20	3		3	30 LRV1-20-353	30 LRV2-20-353
										20		3	3	30 LRV1-20-173	30 LRV2-20-173
30	5		3	30 LRV1-30-353						30 LRV2-30-353					
30		5	3	30 LRV1-30-173						30 LRV2-30-173					
40	5		3	30 LRV1-40-353						30 LRV2-40-353					
40		5	3	30 LRV1-40-173						30 LRV2-40-173					
30,000 to 40,000	60	56	21	2"						20	3		3	40 LRV1-20-353	40 LRV2-20-353
										20		5	3	40 LRV1-20-173	40 LRV2-20-173
					30	5		3	40 LRV1-30-353	40 LRV2-30-353					
					30		5	3	40 LRV1-30-173	40 LRV2-30-173					
40,000 to 65,000	97-1/2	65	22	2"	20		5	3	65 LRV1-20-173	65 LRV2-20-173					
					30		7-1/2	3	65 LRV1-30-173	65 LRV2-30-173					