

11 Solid Reasons to Choose Hoffman™

- Engineered Reliability
- NPT Inlet, Vent, and Overflow Receiver Openings
- Field tested performance. Thousands installed and operating economically and efficiently
- Close Coupled Pump Design
- Mechanical Seal Construction
- Bronze Fitted Centrifugal Pump
- Stainless Steel Motor Shaft
- Renewable Bronze Wearing Ring
- Quiet, Ball Bearing Motor with Dual Voltages
- 100% Factory Wired and Tested
- Available From Factory or Local Stock



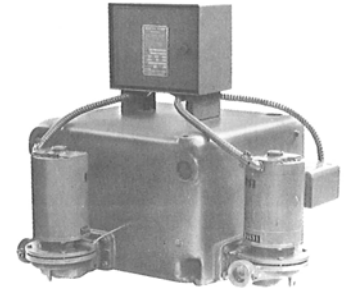
THE WATCHMAN TRADITION
Watchman® Series WC™
Cast Iron Receiver
Single or Duplex



THE NEW ERA OF
WATCHMAN TRADITION!
Watchman® Series WCS™
Steel Receiver
Single or Duplex



Series VBF™
Boiler Feed Units



Duplex Series SCC™
Condensate Units

Hoffman Specialty® Series Stock Units

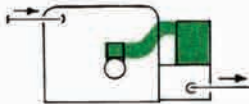
FOR: CONDENSATE RETURN, VACUUM HEATING
& BOILER FEED APPLICATIONS

Hoffman™ Stock Product: THE Recognized Name in Condensate Pumps

UNIT FEATURES

| | | | |
|----------------------|--|-----------------------|--|
| Availability: | Normally factory or locally stocked. | Receivers: | Condensate units feature cast iron and steel receivers. Series VBF Boiler Feed Units feature steel receivers. All cast iron receivers are warranted for 20 years from date of shipment against failure due to corrosion. |
| Pumps: | Close-coupled centrifugal pumps with bronze impeller, bronze wearing ring, carbon/ceramic mechanical seal and stainless steel shaft. | Control Panel: | Three phase units are equipped with NEMA 2 – U.L. Listed Control Panels containing magnetic starters that are factory mounted and wired for 230 volts. Conversion kits are used to field modify for 208 or 460 volt. |
| Float Switch: | Heavy duty, double pole, externally adjustable switches. Contacts are rated to handle 2 HP, single phase motors direct. Duplex condensate units have mechanical alternators. | | |
| Motors: | Vertically mounted, drip proof, ball bearing design. Single phase motors through 2 HP have built in overload protection. Single phase motors are dual voltage, 115/230 volt. Three phase motors are tri-voltage, symbolism 208-230/460 volt. | | |

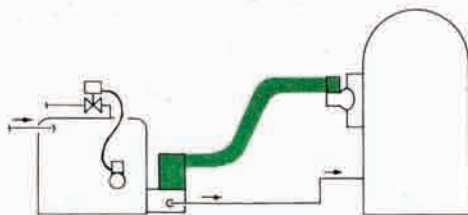
SERIES WC™, WCS™ & SCC™ CONDENSATE UNITS



Operation of a condensate pump

Condensate pumps, like the Hoffman™ Series WC™, WCS™ or SCC™ units are controlled from the water level in the receiver: as the unit fills with returning condensate, the float switch starts the pump, which simply transfers the condensate to another point in the system.

SERIES VBF™ BOILER FEED UNITS



Series VBF™ vertical storage tank for maximum utilization of floor space

Operation of a boiler feed unit

A boiler feed unit like the Series VBF™ is controlled from the water level in the boiler that it serves, by means of a pump control mounted on the boiler. The boiler feed unit does not respond to the level in its own receiver and requires a makeup valve when insufficient condensate is present to satisfy boiler demand. An overflow opening is also required if system surges are common and boiler demand is minimum.

The boiler feed unit must absorb surges in rate of condensate return, so its receiver must be larger than that of a condensate pump. Series VBF™ receivers are pre-sized based on 9-10 minutes system capacity storage.

Selection Tables

WATCHMAN® SERIES WC™ CAST IRON RECEIVER CONDENSATE UNITS –

3500 RPM, 1 Phase 115V. Mechanical Seal, Cast Iron Receiver warranted against failure due to corrosion for 20 years from date of shipment

| Model Number | System Sq. Ft. EDR | Number of Pumps | Disch. Pres. (psig) | Pump Capacity (GPM) | Receiver Capacity (Gal) | Motor HP | Accessories |
|----------------|--------------------|-----------------|---------------------|---------------------|-------------------------|----------|-----------------------|
| WC-6-20-B | 6,000 | Single | 22 | 9 | 6 | 1/3 | Float switch |
| WC-8-20-B | 8,000 | Single | 21 | 12 | 9 | 1/3 | Float switch |
| WC-12-20-B | 12,000 | Single | 20 | 18 | 14 | 1/3 | Float switch |
| WCD-12-20-B MA | 12,000 | Duplex | 20 | 18 | 14 | 1/3 | Mechanical alternator |
| WCD30-30B-MA | 30,000 | Duplex | 30 | 30 | 23 | 1 | Mechanical alternator |

Watchman condensate units are factory wired for 115 volts and may be field converted to 230 volts 1 phase.

WATCHMAN® SERIES WCS™ STEEL RECEIVER CONDENSATE UNITS –

3500 RPM, 1 Phase 115V. Mechanical Seal, Durable, Lightweight Steel Receiver

| Model Number | System Sq. Ft. EDR | Number of Pumps | Disch. Pres. (psig) | Pump Capacity (GPM) | Receiver Capacity (Gal) | Motor HP | Accessories |
|-----------------|--------------------|-----------------|---------------------|---------------------|-------------------------|----------|-----------------------|
| WCS-6-20-B | 6,000 | Single | 22 | 9 | 6 | 1/3 | Float switch |
| WCS-8-20-B | 8,000 | Single | 21 | 12 | 9 | 1/3 | Float switch |
| WCS-12-20-B | 12,000 | Single | 20 | 18 | 14 | 1/3 | Float switch |
| WCSD-12-20-B MA | 12,000 | Duplex | 20 | 18 | 14 | 1/3 | Mechanical alternator |

Watchman condensate units are factory wired for 115 volts and may be field converted to 230 volts 1 phase.

SERIES SCC™ CONDENSATE UNITS –

3500 RPM, Duplex, Mechanical Seal, Cast Iron Receiver warranted against failure due to corrosion for 20 years from date of shipment

| Model Number | System Sq. Ft. EDR | Disch. Pres. (Psig) | Pump Capacity (GPM) | Receiver Capacity (Gal) | Motor HP | Power Supply* | Included Accessories (Control Panels are NEMA 2—U.L. Listed) |
|--------------|--------------------|---------------------|---------------------|-------------------------|----------|---------------------------|--|
| SCC1 | 15,000 | 30 | 15 | 14 | 3/4 | 1 Ph-115 or 230 Volt | Mechanical alternator |
| SCC2 | 15,000 | 30 | 15 | 14 | 3/4 | 3 Ph-208, 230 or 460 Volt | Mechanical alternator Control Panel w/Magnetic starters |
| SCC3-A | 22,000 | 30 | 22 | 23 | 3/4 | 3 Ph-208, 230 or 460 Volt | Mechanical alternator Control Panel w/Magnetic starters |
| SCC4 | 45,000 | 30 | 45 | 36 | 1 1/2 | 3 Ph-208, 230 or 460 Volt | Mechanical alternator Control Panel w/Magnetic starters |

*SCC1 unit is factory wired for 115 volts and may be field converted to 230 volts.

SCC2, SCC3 & SCC4 units are factory wired for 230 volts. Conversion kits must be used to field modify for 208 or 460 volt.

SERIES VBF™ BOILER FEED UNITS –

3500 RPM, 1 Phase 115 Volt, Mechanical Seal, Vertical Steel Receiver

| Model Number | System Sq. Ft. EDR | Boiler HP | Number of Pumps | Disch. Pres. (psig) | Pump Capacity (GPM) | Receiver Capacity (Gal) | Motor HP | Minute Storage (Gal) | Accessories |
|--|--------------------|-----------|-----------------------------|---------------------|---------------------|-------------------------|----------|----------------------|---|
| 30VBFS-B 30VBFD-B | 4,200 | 30 | Single Duplex | 20 | 9 | 30 | 1/3 | 9 | All units include a water level gauge glass with shut-off valves and an internal mechanical make-up water feeder. Optional Accessories are inlet basket strainer, dial or angle thermometer, and Wall Mounted Control Panels. |
| 50VBFS-B 50VBFD-B | 7,000 | 50 | Single Duplex | 20 | 15 | 50 | 1/3 | 11 | |
| 100VBFS-B 100VBFD-B 100VBFT-B | 13,800 | 100 | Single Duplex Triplex | 20 | 15 | 100 | 1/3 | 11 | |
| 200VBFS-20 200VBFD-20 200VBFT-20 | 27,800 | 200 | Single Duplex Triplex | 20 | 30 | 200 | 1/2 | 12 | |
| 200VBFS-30 200VBFD-30 200VBFT-30 | 27,800 | 200 | Single Duplex Triplex | 30 | 30 | 200 | 1 | 12 | |

VBF Boiler Feed Units are factory wired for 115 Volts and may be field converted to 230 volt 1 phase.

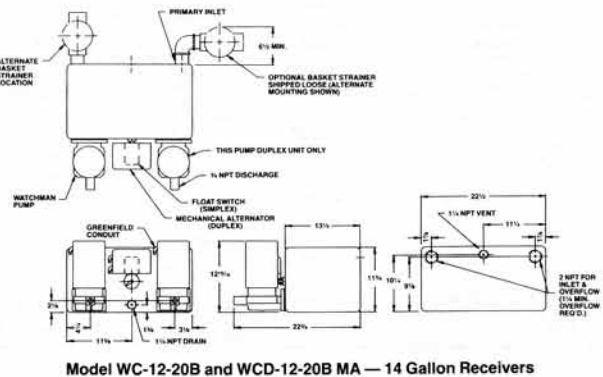
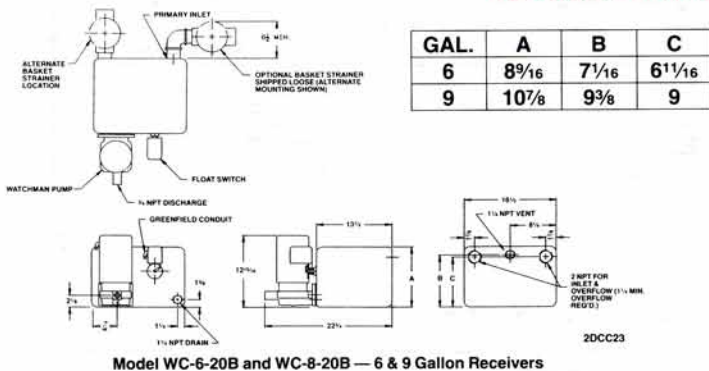
VBF pumps are controlled by level control on boiler (not supplied with unit). Consult your McDonnell & Miller Representative.

Roughing-In Dimensions

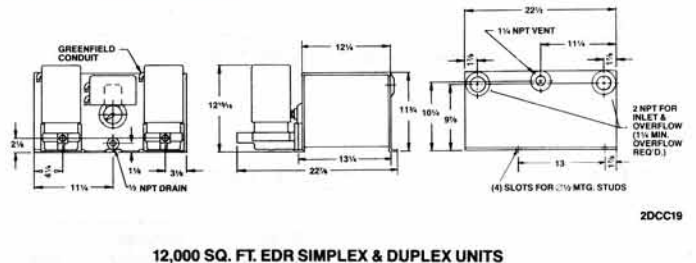
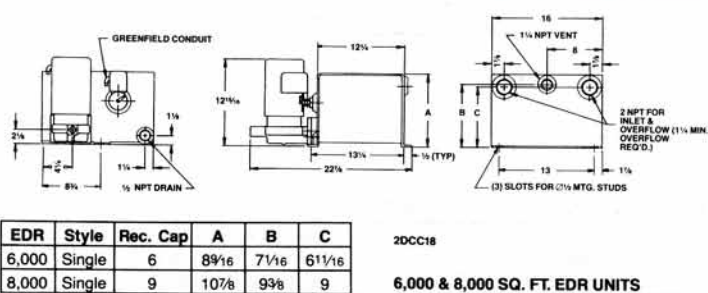
(All dimensions in Inches)

CAUTION: Do not plug or Restrict vent or overflow openings.

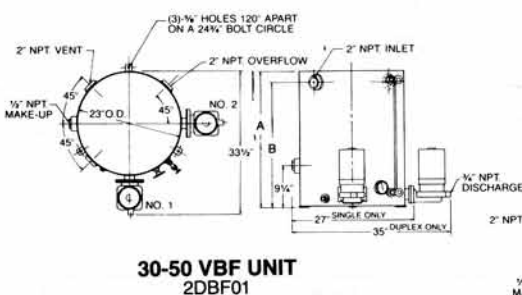
WATCHMAN® SERIES WC™ CAST IRON RECEIVER



WATCHMAN® SERIES WCS™ STEEL RECEIVER

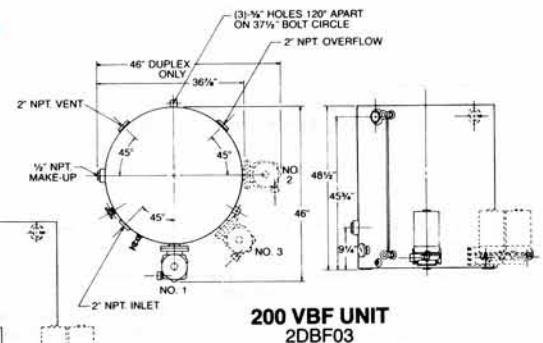
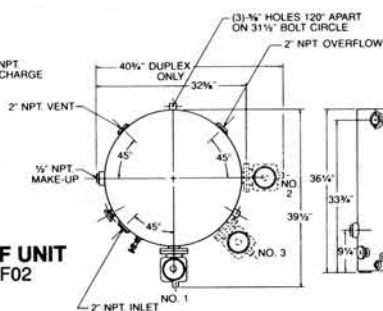


SERIES VBF™ BOILER FEED UNITS



| Unit | A | B |
|-------|--------------------------------|--------------------------------|
| 30VBF | 20 ¹ / ₄ | 17 ³ / ₄ |
| 50VBF | 30 ¹ / ₄ | 27 ³ / ₄ |

100 VBF UNIT
2DBF02



xylem
Let's Solve Water

Xylem Inc.
8200 N. Austin Avenue
Morton Grove, Illinois 60053
Phone: (847) 966-3700
Fax: (847) 965-8379
www.xylem.com/brands/bellgossett