



# Series e-60

In-Line Mounted Centrifugal Pumps  
Maintenance Free  
Replacement Parts



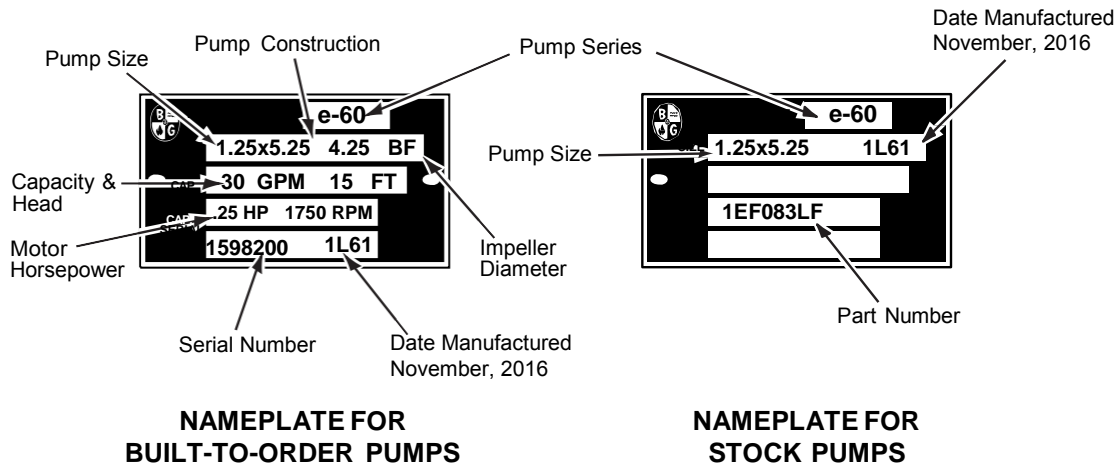


# Index

How to Use This Parts List.....	3
Exploded View – Series e-60 Maintenance Free Pump.....	4
Standard Stock Model Replacement Parts.....	5
Series e-60 1x1x5.25 Replacement Parts.....	6
Series e-60 1.25x1.25x5.25 Replacement Parts.....	7
Series e-60 1.5x1.5x5.25 Replacement Parts.....	8
Series e-60 1.5x1.5x6.25 Replacement Parts.....	9
Series e-60 1.5x1.5x7 Replacement Parts.....	10
Series e-60 2x2x5.25 Replacement Parts.....	11
Series e-60 2x2x6.25 Replacement Parts.....	12
Series e-60 2x2x7 Replacement Parts.....	13
Series e-60 3x3x5.25 Replacement Parts.....	14
Coupler Chart.....	15

# How to use this PARTS LIST

The pump nameplate identifies the pump by model number, pump construction and impeller diameter as shown below.

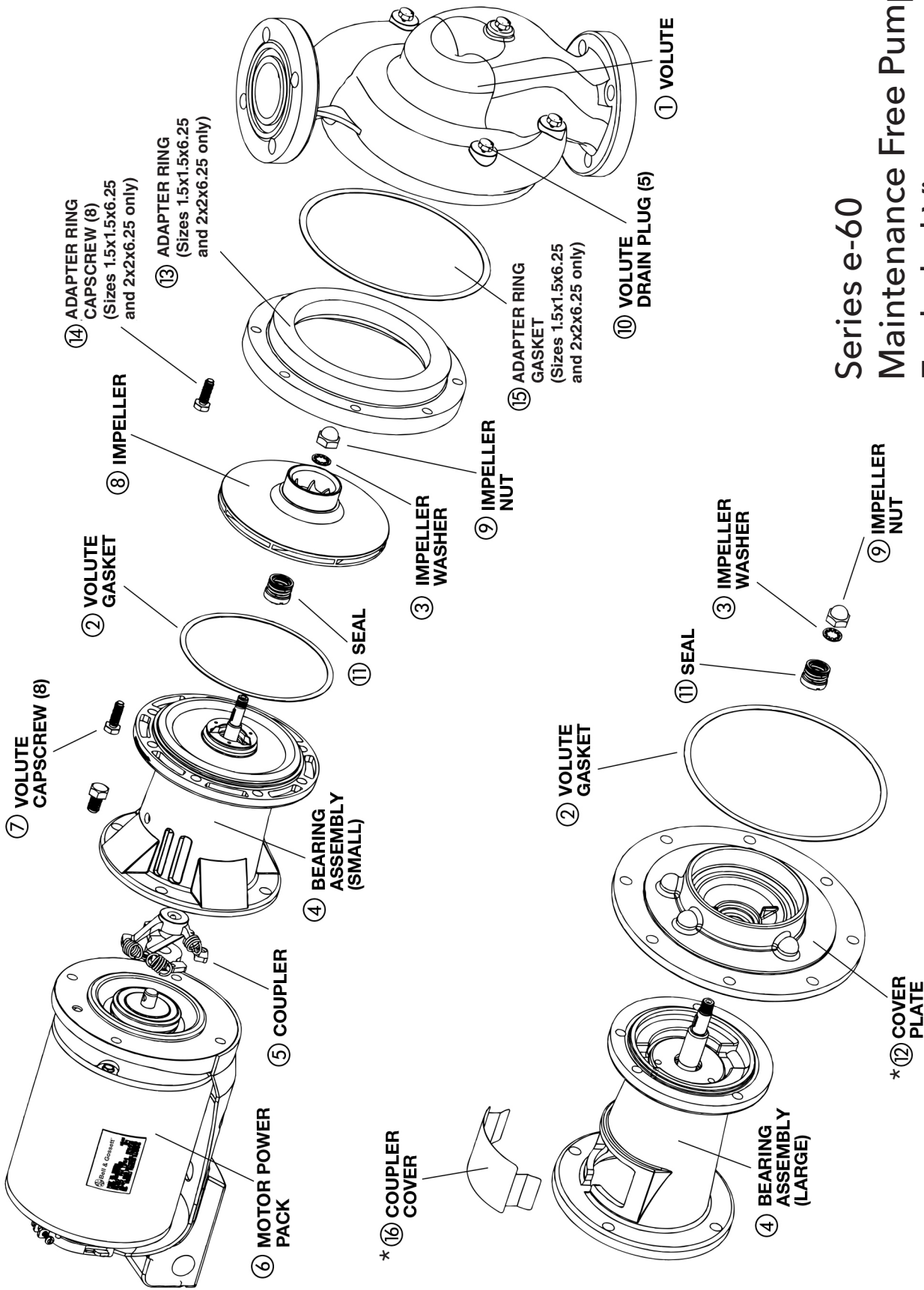


The BTO nameplate above identifies the pump as a Series e-60, size 1.25x5.25 with Bronze-Fitted (BF) construction. The impeller diameter is 4<sup>1</sup>/<sub>4</sub>" and the pump is sized to pump 30 GPM at 15 ft of head. The motor horsepower is 0.25 and the motor speed is 1750 RPM. The serial number uniquely identifies each individual BTO unit for future reference.

The Stock Pump nameplate identifies the pump as a Series e-60, size 1.25x5.25, with date code indicating it was built in November 2016. The part number can be used to provide all other pump information through a part number search.

**DO NOT REMOVE THE NAMEPLATE.** It is important when ordering replacement parts to furnish complete nameplate data. The following procedure will result in proper parts selection:

1. Using the nameplate, determine the model number, pump construction and impeller diameter.
2. Refer to the index of this document to find the parts breakdown for a specific pump model.
3. Find the column pertaining to the pump's specific materials of construction (Bronze-Fitted vs All Bronze)
4. Match the Item Number on the table to the numbered drawing on page 4 to help verify correct part number identification.



# Series e-60 Maintenance Free Pump Exploded View

\*For 1.5x1.5x7 and 2x2x7 only.

## STANDARD STOCK MODEL REPLACEMENT PARTS

PUMP MODEL	PUMP SIZE	HORSEPOWER	(6) MOTOR		(5) COUPLER	(4) BEARING† ASSEMBLY	IMPELLER DIAMETER	(8) IMPELLER
			1 PHASE 115/208-230	3 PHASE 208-230/460				
e601S & e601T	1x1x5.25	1/4	169224	169225	118473	186028LF	4 <sup>3</sup> / <sub>8</sub> "	P82878
Be601S & Be601T	1x1x5.25	1/4	169224	169225	118473	186028LF	4 <sup>3</sup> / <sub>8</sub> "	P82878
e602S & e602T	1x1x5.25	1/3	169226	169227	118473	186028LF	4 <sup>27</sup> / <sub>32</sub> "	P82877
Be602 & Be602T	1x1x5.25	1/3	169226	169227	118473	186028LF	4 <sup>27</sup> / <sub>32</sub> "	P82877
e603S & e603T	1x1x5.25	1/2	169228	169229	118473	186028LF	5 <sup>1</sup> / <sub>4</sub> "	P58541
Be603S & Be603T	1x1x5.25	1/2	169228	169229	118473	186028LF	5 <sup>1</sup> / <sub>4</sub> "	P58541
e604S & e604T	1.25x1.25x5.25	1/4	169224	169225	118473	186028LF	4 <sup>3</sup> / <sub>8</sub> "	P82878
Be604S & Be604T	1.25x1.25x5.25	1/4	169224	169225	118473	186028LF	4 <sup>3</sup> / <sub>8</sub> "	P82878
e605S & e605T	1.25x1.25x5.25	1/3	169226	169227	118473	186028LF	4 <sup>27</sup> / <sub>32</sub> "	P82877
Be605S & Be605T	1.25x1.25x5.25	1/3	169226	169227	118473	186028LF	4 <sup>27</sup> / <sub>32</sub> "	P82877
e606S & e606T	1.25x1.25x5.25	1/2	169228	169229	118473	186028LF	5 <sup>1</sup> / <sub>4</sub> "	P58541
Be606S & Be606T	1.25x1.25x5.25	1/2	169228	169229	118473	186028LF	5 <sup>1</sup> / <sub>4</sub> "	P58541
e607S & e607T	1.5x1.5x5.25	1/3	169226	169227	118473	186028LF	4 <sup>3</sup> / <sub>8</sub> "	P82881
Be607S & Be607T	1.5x1.5x5.25	1/3	169226	169227	118473	186028LF	4 <sup>3</sup> / <sub>8</sub> "	P82881
e608S & e608T	1.5x1.5x5.25	1/2	169228	169229	118473	186028LF	4 <sup>15</sup> / <sub>16</sub> "	P82880
Be608S & Be608T	1.5x1.5x5.25	1/2	169228	169229	118473	186028LF	4 <sup>15</sup> / <sub>16</sub> "	P82880
e609S & e609T	1.5x1.5x5.25	3/4	169230	169231	118473	186028LF	5 <sup>1</sup> / <sub>4</sub> "	P58538
Be609S & Be609T	1.5x1.5x5.25	3/4	169230	169231	118473	186028LF	5 <sup>1</sup> / <sub>4</sub> "	P58538
e610S & e610T	2x2x5.25	1/2	169228	169229	185329	186028LF	4 <sup>1</sup> / <sub>8</sub> "	P82883
Be610S & Be610T	2x2x5.25	1/2	169228	169229	185329	186028LF	4 <sup>1</sup> / <sub>8</sub> "	P82883
e611S & e611T	2x2x5.25	3/4	169230	169231	118473	186028LF	4 <sup>3</sup> / <sub>4</sub> "	P82882
Be611S & Be611T	2x2x5.25	3/4	169230	169231	118473	186028LF	4 <sup>3</sup> / <sub>4</sub> "	P82882
e612S & e612T	2x2x5.25	1	169232	169233	185329	186028LF	5 <sup>1</sup> / <sub>4</sub> "	P58536
Be612S & Be612T	2x2x5.25	1	169232	169233	185329	186028LF	5 <sup>1</sup> / <sub>4</sub> "	P58536
e613S & e613T	1.5x1.5x6.25	3/4	169230	169231	185329	186028LF*	5 <sup>3</sup> / <sub>4</sub> "	P82884
e614S & e614T	1.5x1.5x6.25	1	169232	169233	185329	186028LF*	6 <sup>1</sup> / <sub>4</sub> "	P58564
Be614S & Be614T	1.5x1.5x6.25	1	169232	169233	185329	186028LF*	6 <sup>1</sup> / <sub>4</sub> "	P58564
e615S & e615T	2x2x6.25	3/4	169230	169231	185329	186028LF*	5 <sup>5</sup> / <sub>8</sub> "	P82885
Be615S & Be615T	2x2x6.25	3/4	169230	169231	185329	186028LF*	5 <sup>5</sup> / <sub>8</sub> "	P82885
e616S & e616T	2x2x6.25	1	169232	169233	185329	186028LF*	6 <sup>7</sup> / <sub>32</sub> "	P58562
e617S & e617T	1.5x1.5x7	1.5	169236	169237	186003	186034LF	6 <sup>1</sup> / <sub>2</sub> "	P57460
e618T	1.5x1.5x7	2	NONE	169238	186003	186034LF	7"	P57440
e619T	2x2x7	2	NONE	169238	186003	186034LF	6 <sup>1</sup> / <sub>2</sub> "	P82137
e620T	2x2x7	3	NONE	169234	185331	186034LF	7"	P57580
e621S & e621T	1.5x1.5x6.25	1/2	169228	169229	118473	186028LF*	4 <sup>7</sup> / <sub>8</sub> "	P58661
Be621S & Be621T	1.5x1.5x6.25	1/2	169228	169229	118473	186028LF*	4 <sup>7</sup> / <sub>8</sub> "	P58661
e622S & e622T	1.5x1.5x7	3/4	169230	169231	186410	186034LF	5 <sup>1</sup> / <sub>2</sub> "	P58662
e623S & e623T	1.5x1.5x7	1	169232	169233	185330	186034LF	6"	P58663
e624S & e624T	2x2x7	1	169232	169233	185330	186034LF	5 <sup>11</sup> / <sub>16</sub> "	P58664
e625S & e625T	2x2x7	1.5	169236	169237	186003	186034LF	6 <sup>1</sup> / <sub>8</sub> "	P58665
e626S & e626T	3x3x5.25	3/4	169230	169231	185329	186028LF	4 <sup>3</sup> / <sub>8</sub> "	P83023
Be626S & Be626T	3x3x5.25	3/4	169230	169231	185329	186028LF	4 <sup>3</sup> / <sub>8</sub> "	P83023
e627S & e627T	3x3x5.25	1.5	169236	169237	P75421	186028LF	5 <sup>1</sup> / <sub>4</sub> "	P58636
Be627S & Be627T	3x3x5.25	1.5	169236	169237	P75421	186028LF	5 <sup>1</sup> / <sub>4</sub> "	P58636

\*Adapter ring gasket P58542 must also be ordered when bearing assembly is replaced on all 6.25" pumps.

† With EPR/Carbon/SiC Std. Seal

— Factory recommended spare parts.

# SERIES e-60 1x1x5.25

## VOLUTES, IMPELLERS & FLANGES

ITEM NO.	DESCRIPTION	BRONZE FITTED	ALL BRONZE
1	Volute	186386	186931LF
10	Volute Drain Plug (5 Req'd)	P39020	P39470
7	Volute Capscrew (8 Req'd)	P10620	P10620
2	Volute Gasket	P57410	P57410
8	Impeller (State Diameter)	P58541	P58541
	Impeller Key	P04940	P04940
9	Impeller Nut	P2000236	P2000236
3	Impeller Washer	P04660	P04660
	Flange (2 Req'd)	P01510	P00794
	Fastener Package	P64910	P64910
	Flange Gasket Set	118368	118368

## XL-11™ BEARING ASSEMBLIES (FOR BF OR AB PUMPS)

ITEM NO.	DESCRIPTION	MODELS WITH COPPER SHAFT SLEEVE			MODELS WITH STAINLESS STEEL SHAFT SLEEVE		
4	Bearing Assy. – Includes the Following:	186028LF <sup>1</sup>	186029LF <sup>2</sup>	186030LF <sup>3</sup>	186031LF <sup>1</sup>	186032LF <sup>2</sup>	186033LF <sup>3</sup>
11	Seal Kit No. <i>Seal Type</i>	186046LF <sup>1</sup> Std.	186047LF <sup>2</sup> <i>Opt.</i>	186048LF <sup>3</sup> <i>Opt.</i>	186046LF <sup>1</sup> Std.	186047LF <sup>2</sup> <i>Opt.</i>	186048LF <sup>3</sup> <i>Opt.</i>
	XL-11™ Small Bearing Frame Repair Kit*	185335LF*	185335LF*	185335LF*	185336*	185336*	185336*
2	Volute Gasket	P57410	P57410	P57410	P57410	P57410	P57410

<sup>1</sup>EPR/Carbon/SiC    <sup>2</sup>FKM/Carbon/SiC    <sup>3</sup>EPR/SiC/SiC

\*Includes pre-assembled faceplate, nose cone, shaft and bearings. Wave spring and volute gasket are also supplied.

## ITEM NO. 5 COUPLERS

See chart, p.15

## ITEM NO. 6 POWER PACKS

HP	1 PHASE 115/208-230	3 PHASE 208-230/460	RING MOUNTS
1/4	169224	169225	118228
1/3	169226	169227	118228
1/2	169228	169229	118228
3/4	169230	169231	118228

– Factory recommended spare parts.

# SERIES e-60 1.25x1.25x5.25

## VOLUTES, IMPELLERS & FLANGES

ITEM NO.	DESCRIPTION	BRONZE FITTED	ALL BRONZE
1	Volute	186386	186931LF
10	Volute Drain Plug (5 Req'd)	P39020	P39470
7	Volute Capscrew (8 Req'd)	P10620	P10620
2	Volute Gasket	P57410	P57410
8	Impeller (State Diameter)	P58541	P58541
	Impeller Key	P04940	P04940
9	Impeller Nut	P2000236	P2000236
3	Impeller Washer	P04660	P04660
	Flange (2 Req'd)	P03250	P03251
	Fastener Package	P64910	P64910
	Flange Gasket Set	118368	118368

## XL-11™ BEARING ASSEMBLIES (FOR BF OR AB PUMPS)

ITEM NO.	DESCRIPTION	MODELS WITH COPPER SHAFT SLEEVE			MODELS WITH STAINLESS STEEL SHAFT SLEEVE		
4	Bearing Assy. – Includes the Following:	186028LF <sup>1</sup>	186029LF <sup>2</sup>	186030LF <sup>3</sup>	186031LF <sup>1</sup>	186032LF <sup>2</sup>	186033LF <sup>3</sup>
11	Seal Kit No. <i>Seal Type</i>	186046LF <sup>1</sup> Std.	186047LF <sup>2</sup> Opt.	186048LF <sup>3</sup> Opt.	186046LF <sup>1</sup> Std.	186047LF <sup>2</sup> Opt.	186048LF <sup>3</sup> Opt.
	XL-11™ Small Bearing Frame Repair Kit*	185335LF*	185335LF*	185335LF*	185336*	185336*	185336*
2	Volute Gasket	P57410	P57410	P57410	P57410	P57410	P57410

<sup>1</sup>EPR/Carbon/SiC<sup>2</sup>FKM/Carbon/SiC<sup>3</sup>EPR/SiC/SiC

\*Includes pre-assembled faceplate, nose cone, shaft and bearings. Wave spring and volute gasket are also supplied.

## ITEM NO. 5 COUPLERS

See chart, p.15

## ITEM NO. 6 POWER PACKS

HP	1 PHASE 115/208-230	3 PHASE 208-230/460	RING MOUNTS
1/4	169224	169225	118228
1/3	169226	169227	118228
1/2	169228	169229	118228
3/4	169230	169231	118228

 – Factory recommended spare parts.

# SERIES e-60 1.5x1.5x5.25

## VOLUTES, IMPELLERS & FLANGES

ITEM NO.	DESCRIPTION	BRONZE FITTED	ALL BRONZE
1	Volute	186389	186932LF
10	Volute Drain Plug (5 Req'd)	P39020	P39470
7	Volute Capscrew (8 Req'd)	P10620	P10620
2	Volute Gasket	P57410	P57410
8	Impeller (State Diameter)	P58538	P58538
	Impeller Key	P04940	P04940
9	Impeller Nut	P2000236	P2000236
3	Impeller Washer	P04660	P04660
	Flange (2 Req'd)	P03410	P2000090
	Fastener Package	P64940	P64930
	Flange Gasket Set	118373	118373

## XL-11™ BEARING ASSEMBLIES (FOR BF OR AB PUMPS)

ITEM NO.	DESCRIPTION	MODELS WITH COPPER SHAFT SLEEVE			MODELS WITH STAINLESS STEEL SHAFT SLEEVE		
4	Bearing Assy. – Includes the Following:	186028LF <sup>1</sup>	186029LF <sup>2</sup>	186030LF <sup>3</sup>	186031LF <sup>1</sup>	186032LF <sup>2</sup>	186033LF <sup>3</sup>
11	Seal Kit No. <i>Seal Type</i>	186046LF <sup>1</sup> Std.	186047LF <sup>2</sup> Opt.	186048LF <sup>3</sup> Opt.	186046LF <sup>1</sup> Std.	186047LF <sup>2</sup> Opt.	186048LF <sup>3</sup> Opt.
	XL-11™ Small Bearing Frame Repair Kit*	185335LF*	185335LF*	185335LF*	185336	185336	185336
2	Volute Gasket	P57410	P57410	P57410	P57410	P57410	P57410

<sup>1</sup>EPR/Carbon/SiC    <sup>2</sup>FKM/Carbon/SiC    <sup>3</sup>EPR/SiC/SiC

\*Includes pre-assembled faceplate, nose cone, shaft and bearings. Wave spring and volute gasket are also supplied.

## ITEM NO. 5 COUPLERS

See chart, p.15

## ITEM NO. 6 POWER PACKS

HP	1 PHASE 115/208-230	3 PHASE 208-230/460	RING MOUNTS
1/4	169224	169225	118228
1/3	169226	169227	118228
1/2	169228	169229	118228
3/4	169230	169231	118228

– Factory recommended spare parts.



# SERIES e-60 1.5x1.5x6.25

## VOLUTES, IMPELLERS & FLANGES

ITEM NO.	DESCRIPTION	BRONZE FITTED	ALL BRONZE
1	Volute	186935	186671LF
10	Volute Drain Plug (5 Req'd)	P39020	P39470
7	Volute Capscrew (8 Req'd)	P10620	P01850
2	Volute Gasket	P57410	P57410
13	Adapter Ring	P58576	P58578
14	Adapter Ring Capscrew (8 Req'd)	DJ0034	P01850
15	Adapter Ring Gasket	P58542	P58542
8	Impeller (State Diameter)	P58564	P58564
	Impeller Key	P04940	P04940
9	Impeller Nut	P2000236	P2000236
3	Impeller Washer	P04660	P04660
	Flange (2 Req'd)	P03410	P2000090
	Fastener Package	P64940	P64930
	Flange Gasket Set	118373	118373
	Motor Ring Adapter	P76944	P76944

## XL-11™ BEARING ASSEMBLIES (FOR BF OR AB PUMPS)

ITEM NO.	DESCRIPTION	MODELS WITH COPPER SHAFT SLEEVE			MODELS WITH STAINLESS STEEL SHAFT SLEEVE		
4	Bearing Assy. – Includes the Following:	**186028LF <sup>1</sup>	**186029LF <sup>2</sup>	**186030LF <sup>3</sup>	**186031LF <sup>1</sup>	**186032LF <sup>2</sup>	**186033LF <sup>3</sup>
11	Seal Kit No. Seal Type	186046LF <sup>1</sup> Std.	186047LF <sup>2</sup> Opt.	186048LF <sup>3</sup> Opt.	186046LF <sup>1</sup> Std.	186047LF <sup>2</sup> Opt.	186048LF <sup>3</sup> Opt.
	XL-11™ Small Bearing Frame Repair Kit*	185335LF*	185335LF*	185335LF*	185336*	185336*	185336*
2	Volute Gasket	P57410	P57410	P57410	P57410	P57410	P57410

<sup>1</sup>EPR/Carbon/SiC    <sup>2</sup>FKM/Carbon/SiC    <sup>3</sup>EPR/SiC/SiC

\*Includes pre-assembled faceplate, nose cone, shaft and bearings. Wave spring and volute gasket are also supplied.

\*\*Adapter Ring Gasket P58542 must also be ordered when bearing assembly is replaced on all 6.25" pumps.

## ITEM NO. 5 COUPLERS

See chart, p.15

## ITEM NO. 6 POWER PACKS

HP	1 PHASE 115/208-230	3 PHASE 208-230/460	RING MOUNTS
1/2	169228	169229	118228
3/4	169230	169231	118228
1	169232	169233	118848
1.5	169236	169237	NONE

– Factory recommended spare parts.

# SERIES e-60 1.5x1.5x7

## VOLUTES, IMPELLERS & FLANGES

ITEM NO.	DESCRIPTION	BRONZE FITTED	ALL BRONZE
1	Volute	186390	186934LF
10	Volute Drain Plug (5 Req'd)	P39020	P39470
7	Volute Capscrew (8 Req'd)	P40020	P52310
2	Volute Gasket	P57700	P57700
8	Impeller (State Diameter)	P57440	P57440
	Impeller Key	P49358	P49358
9	Impeller Nut	P2000220	P2000220
3	Impeller Washer	P11220	P11220
	Flange (2 Req'd)	P03410	P2000090
	Fastener Package	P64940	P64930
	Flange Gasket Set	118373	118373

## XL-11™ BEARING ASSEMBLIES

### FOR BRONZE FITTED (BF) PUMPS

ITEM NO.	DESCRIPTION	MODELS WITH COPPER SHAFT SLEEVE			MODELS WITH STAINLESS STEEL SHAFT SLEEVE		
4	Bearing Assy. – Includes the following:	186034LF <sup>1</sup>	186036LF <sup>2</sup>	186035LF <sup>3</sup>	186037LF <sup>1</sup>	186039LF <sup>2</sup>	186038LF <sup>3</sup>
11	Seal Kit No. <i>Seal Type</i>	186049LF <sup>1</sup> <i>Std.</i>	186050LF <sup>2</sup> <i>Opt.</i>	186051LF <sup>3</sup> <i>Opt.</i>	186049LF <sup>1</sup> <i>Std.</i>	186050LF <sup>2</sup> <i>Opt.</i>	186051LF <sup>3</sup> <i>Opt.</i>
	XL-11™ Lrg. Bearing Frame Repair Kit*	185337LF*	185337LF*	185337LF*	185338*	185338*	185338*
2	Volute Gasket	P57700	P57700	P57700	P57700	P57700	P57700
12	Cover Plate	P57246	P57246	P57246	P57246	P57246	P57246
16	Coupler Cover	P03982	P03982	P03982	P03982	P03982	P03982

### FOR ALL BRONZE (AB) PUMPS

4	Bearing Assy. – Includes the Following:	186040LF <sup>1</sup>	186042LF <sup>2</sup>	186041LF <sup>3</sup>	186043LF <sup>1</sup>	186045LF <sup>2</sup>	186044LF <sup>3</sup>
11	Seal Kit No. <i>Seal Type</i>	186049LF <sup>1</sup> <i>Std.</i>	186050LF <sup>2</sup> <i>Opt.</i>	186051LF <sup>3</sup> <i>Opt.</i>	186049LF <sup>1</sup> <i>Std.</i>	186050LF <sup>2</sup> <i>Opt.</i>	186051LF <sup>3</sup> <i>Opt.</i>
	XL-11™ Lrg. Bearing Frame Repair Kit*	185337LF*	185337LF*	185337LF*	185338*	185338*	185338*
2	Volute Gasket	P57700	P57700	P57700	P57700	P57700	P57700
12	Cover Plate	P2000095	P2000095	P2000095	P2000095	P2000095	P2000095
16	Coupler Cover	P03982	P03982	P03982	P03982	P03982	P03982

<sup>1</sup>EPR/Carbon/SiC    <sup>2</sup>FKM/Carbon/SiC    <sup>3</sup>EPR/SiC/SiC

\*Includes pre-assembled faceplate, nose cone, shaft and bearings. Wave spring and volute gasket are also supplied.

## ITEM NO. 5 COUPLERS

See chart, p.15

## ITEM NO. 6 POWER PACKS

HP	1 PHASE 115/208-230	3 PHASE 208-230/460	RING MOUNTS
<sup>3</sup> / <sub>4</sub>	169230	169231	118228
1	169232	169233	118848
1.5	169236	169237	NONE
2	NONE	169238	NONE

# SERIES e-60 2x2x5.25

## VOLUTES, IMPELLERS & FLANGES

ITEM NO.	DESCRIPTION	BRONZE FITTED	ALL BRONZE
1	Volute	186392	186933LF
10	Volute Drain Plug (5 Req'd)	P39020	P39470
7	Volute Capscrew (8 Req'd)	P10620	P10620
2	Volute Gasket	P57410	P57410
8	Impeller (State Diameter)	P58536	P58536
	Impeller Key	P04940	P04940
9	Impeller Nut	P2000236	P2000236
3	Impeller Washer	P04660	P04660
	Flange (2 Req'd)	F14200	P2000078
	Fastener Package (2 Req'd)	P65031	P65030
	Flange Gasket Set	118378	118378
	Motor Ring Adapter	P76944	P76944

## XL-11™ BEARING ASSEMBLIES (FOR BF OR AB PUMPS)

ITEM NO.	DESCRIPTION	MODELS WITH COPPER SHAFT SLEEVE			MODELS WITH STAINLESS STEEL SHAFT SLEEVE		
4	Bearing Assy. – Includes the Following:	186028LF <sup>1</sup>	186029LF <sup>2</sup>	186030LF <sup>3</sup>	186031LF <sup>1</sup>	186032LF <sup>2</sup>	186033LF <sup>3</sup>
11	Seal Kit No. <i>Seal Type</i>	186046LF <sup>1</sup> Std.	186047LF <sup>2</sup> <i>Opt.</i>	186048LF <sup>3</sup> <i>Opt.</i>	186046LF <sup>1</sup> Std.	186047LF <sup>2</sup> <i>Opt.</i>	186048LF <sup>3</sup> <i>Opt.</i>
	XL-11™ Small Bearing Frame Repair Kit*	185335LF*	185335LF*	185335LF*	185336	185336	185336
2	Volute Gasket	P57410	P57410	P57410	P57410	P57410	P57410

<sup>1</sup>EPR/Carbon/SiC    <sup>2</sup>FKM/Carbon/SiC    <sup>3</sup>EPR/SiC/SiC

\*Includes pre-assembled faceplate, nose cone, shaft and bearings. Wave spring and volute gasket are also supplied.

## ITEM NO. 5 COUPLERS

See chart, p.15

## ITEM NO. 6 POWER PACKS

HP	1 PHASE 115/208-230	3 PHASE 208-230/460	RING MOUNTS
1/3	169226	169227	118228
1/2	169228	169229	118228
3/4	169230	169231	118228
1	169232	169233	118848
1.5	169236	169237	NONE

– Factory recommended spare parts.

# SERIES e-60 2x2x6.25

## VOLUTES, IMPELLERS & FLANGES

ITEM NO.	DESCRIPTION	BRONZE FITTED	ALL BRONZE
1	Volute	186936	186672LF
10	Volute Drain Plug (5 Req'd)	P39020	P39470
7	Volute Capscrew (8 Req'd)	P10620	P10620
2	Volute Gasket	P57410	P57410
13	Adapter Ring	P58576	P58578
14	Adapter Ring Capscrew (8 Req'd)	DJ0034	P10620
15	Adapter Ring Gasket	P58542	P58542
8	Impeller (State Diameter)	P58562	P58562
	Impeller Key	P04940	P04940
9	Impeller Nut	P2000236	P2000236
3	Impeller Washer	P04660	P04660
	Flange (2 Req'd)	F14200	P2000078
	Fastener Package (2 Req'd)	P65031	P65030
	Flange Gasket Set	118378	118378
	Motor Ring Adapter	P76944	P76944

## XL-11™ BEARING ASSEMBLIES (FOR BF OR AB PUMPS)

ITEM NO.	DESCRIPTION	MODELS WITH COPPER SHAFT SLEEVE			MODELS WITH STAINLESS STEEL SHAFT SLEEVE		
4	Bearing Assy. – Includes the Following:	**186028LF <sup>1</sup>	**186029LF <sup>2</sup>	**186030LF <sup>3</sup>	**186031LF <sup>1</sup>	**186032LF <sup>2</sup>	**186033LF <sup>3</sup>
11	Seal Kit No. <i>Seal Type</i>	186046LF <sup>1</sup> Std.	186047LF <sup>2</sup> <i>Opt.</i>	186048LF <sup>3</sup> <i>Opt.</i>	186046LF <sup>1</sup> Std.	186047LF <sup>2</sup> <i>Opt.</i>	186048LF <sup>3</sup> <i>Opt.</i>
	XL-11™ Small Bearing Frame Repair Kit*	185335LF*	185335LF*	185335LF*	185336*	185336*	185336*
2	Volute Gasket	P57410	P57410	P57410	P57410	P57410	P57410

<sup>1</sup>EPR/Carbon/SiC    <sup>2</sup>FKM/Carbon/SiC    <sup>3</sup>EPR/SiC/SiC

\*Includes pre-assembled faceplate, nose cone, shaft and bearings. Wave spring and volute gasket are also supplied.

\*\*Adapter Ring Gasket P58542 must also be ordered when bearing assembly is replaced on all 6½" pumps.

## ITEM NO. 5 COUPLERS

See chart, p.15

## ITEM NO. 6 POWER PACKS

HP	1 PHASE 115/208-230	3 PHASE 208-230/460	RING MOUNTS
1/2	169228	169229	118228
3/4	169230	169231	118228
1	169232	169233	118848
1 1/2	169236	169237	NONE

– Factory recommended spare parts.

## SERIES e-60 2x2x7

### VOLUTES, IMPELLERS & FLANGES

ITEM NO.	DESCRIPTION	BRONZE FITTED	ALL BRONZE
1	Volute	186937	186938LF
10	Volute Drain Plug (5 Req'd)	P39020	P39470
7	Volute Capscrew (8 Req'd)	P40020	P52310
2	Volute Gasket	P57700	P57700
8	Impeller (State Diameter)	P57580	P57580
	Impeller Key	P49358	P49358
9	Impeller Nut	P2000220	P2000220
3	Impeller Washer	P11220	P11220
	Flange (2 Req'd)	F14200	P2000078
	Fastener Package (2 Req'd)	P65031	P64930
	Flange Gasket Set	118378	118378

### XL-11™ BEARING ASSEMBLIES

#### FOR BRONZE FITTED (BF) PUMPS

ITEM NO.	DESCRIPTION	MODELS WITH COPPER SHAFT SLEEVE			MODELS WITH STAINLESS STEEL SHAFT SLEEVE		
4	Bearing Assy. – Includes the following:	186034LF <sup>1</sup>	186036LF <sup>2</sup>	186035LF <sup>3</sup>	186037LF <sup>1</sup>	186039LF <sup>2</sup>	186038LF <sup>3</sup>
11	Seal Kit No. <i>Seal Type</i>	186049LF <sup>1</sup> <i>Std.</i>	186050LF <sup>2</sup> <i>Opt.</i>	186051LF <sup>3</sup> <i>Opt.</i>	186049LF <sup>1</sup> <i>Std.</i>	186050LF <sup>2</sup> <i>Opt.</i>	186051LF <sup>3</sup> <i>Opt.</i>
	XL-11™ Lrg. Bearing Frame Repair Kit*	185337LF*	185337LF*	185337LF*	185338*	185338*	185338*
2	Volute Gasket	P57700	P57700	P57700	P57700	P57700	P57700
12	Cover Plate	P57246	P57246	P57246	P57246	P57246	P57246
16	Coupler Cover	P03982	P03982	P03982	P03982	P03982	P03982

#### FOR ALL BRONZE (AB) PUMPS

4	Bearing Assy. – Includes the Following:	186040LF <sup>1</sup>	186042LF <sup>2</sup>	186041LF <sup>3</sup>	186043LF <sup>1</sup>	186045LF <sup>2</sup>	186044LF <sup>3</sup>
11	Seal Kit No. <i>Seal Type</i>	186049LF <sup>1</sup> <i>Std.</i>	186050LF <sup>2</sup> <i>Opt.</i>	186051LF <sup>3</sup> <i>Opt.</i>	186049LF <sup>1</sup> <i>Std.</i>	186050LF <sup>2</sup> <i>Opt.</i>	186051LF <sup>3</sup> <i>Opt.</i>
	XL-11™ Lrg. Bearing Frame Repair Kit*	185337LF*	185337LF*	185337LF*	185338*	185338*	185338*
2	Volute Gasket	P57700	P57700	P57700	P57700	P57700	P57700
12	Cover Plate	P2000095	P2000095	P2000095	P2000095	P2000095	P2000095
16	Coupler Cover	P03982	P03982	P03982	P03982	P03982	P03982

<sup>1</sup>EPR/Carbon/SiC<sup>2</sup>FKM/Carbon/SiC<sup>3</sup>EPR/SiC/SiC

\*Includes pre-assembled faceplate, nose cone, shaft and bearings. Wave spring and volute gasket are also supplied.

### ITEM NO. 5 COUPLERS

See chart, p.15

### ITEM NO. 6 POWER PACKS

HP	1 PHASE 115/208-230	3 PHASE 208-230/460	RING MOUNTS
<sup>3</sup> / <sub>4</sub>	169230	169231	118228
1	169232	169233	118848
1 <sup>1</sup> / <sub>2</sub>	169236	169237	NONE
2	NONE	169238	NONE
3	NONE	169234	NONE

# SERIES e-60 3x3x5.25

## VOLUTES, IMPELLERS & FLANGES

ITEM NO.	DESCRIPTION	BRONZE FITTED	ALL BRONZE
1	Volute	118449	P09290
10	Volute Drain Plug (5 Req'd)	P39020	P39470
7	Volute Capscrew (8 Req'd)	P10620	P01850
2	Volute Gasket	P57410	P57410
8	Impeller (State Diameter)	P58536	P58536
	Impeller Key	P04940	P04940
9	Impeller Nut	P2000236	P2000236
3	Impeller Washer	P04660	P04660
	Flange (2 Req'd)	F74000	P2000081
	Fastener Package	P65130	P65130
	Flange Gasket Set	118129	118129
	Motor Ring Adapter	P76944	P76944

## XL-11™ BEARING ASSEMBLIES (FOR BF OR AB PUMPS)

ITEM NO.	DESCRIPTION	MODELS WITH COPPER SHAFT SLEEVE			MODELS WITH STAINLESS STEEL SHAFT SLEEVE		
4	Bearing Assy. – Includes the Following:	186028LF <sup>1</sup>	186029LF <sup>2</sup>	186030LF <sup>3</sup>	186031LF <sup>1</sup>	186032LF <sup>2</sup>	186033LF <sup>3</sup>
11	Seal Kit No. <i>Seal Type</i>	186046LF <sup>1</sup> Std.	186047LF <sup>2</sup> Opt.	186048LF <sup>3</sup> Opt.	186046LF <sup>1</sup> Std.	186047LF <sup>2</sup> Opt.	186048LF <sup>3</sup> Opt.
	XL-11™ Small Bearing Frame Repair Kit*	185335LF*	185335LF*	185335LF*	185336	185336	185336
2	Volute Gasket	P57410	P57410	P57410	P57410	P57410	P57410

<sup>1</sup>EPR/Carbon/SiC    <sup>2</sup>FKM/Carbon/SiC    <sup>3</sup>EPR/SiC/SiC

\*Includes pre-assembled faceplate, nose cone, shaft and bearings. Wave spring and volute gasket are also supplied.

## ITEM NO. 5 COUPLERS

See chart, p.15


## ITEM NO. 6 POWER PACKS

HP	1 PHASE 115/208-230	3 PHASE 208-230/460	RING MOUNTS
1/3	169226	169227	118228
1/2	169228	169229	118228
3/4	169230	169231	118228
1	169232	169233	118848
1 1/2	169236	169237	NONE

– Factory recommended spare parts.

### ITEM NO. 5 COUPLERS

PUMP SIZE	SHAFT DIAMETER	MOTOR HP (60 Hz)	MOTOR FRAME SIZE	MOTOR SHAFT SIZE	STANDARD COUPLER	ELASTOMERIC COUPLER OPTION
1x1x5.25	½"	¼ - ½	B&G POWER	½"	118473	185329
1.25x1.25x5.25		¾ - 1	PACK		185329	185329
1.5x1.5x5.25		¼ - 1.5	56	⅝"	185330	185330
1.5x1.5x6.25		1.5	56C	⅝"	P75421	P75421
2x2x5.25		1.5	143TC	⅞"	P75422	P75422
2x2x6.25		1 - 1.5	143 / 145	⅞"	P58598	P58598
3x3x5.25						
1.5x1.5x7 2x2x7	¾"	¾ - 1	B&G POWER	½"	186410	185330
		1	PACK		185330	185330
		¾ - 1	56	⅝"	186004	186004
		1.5 - 3	56	⅝"	186003	186003
		1.5 - 3	143 / 145	⅞"	185331	185331
		3	182 / 184	1⅛"	P77281	P77281

 - Factory recommended spare parts.

# Xylem |'zīləm|

- 1) The tissue in plants that brings water upward from the roots;
- 2) a leading global water technology company.

We're a global team unified in a common purpose: creating advanced technology solutions to the world's water challenges. Developing new technologies that will improve the way water is used, conserved, and re-used in the future is central to our work. Our products and services move, treat, analyze, monitor and return water to the environment, in public utility, industrial, residential and commercial building services, and agricultural settings. With its October 2016 acquisition of Sensus, Xylem added smart metering, network technologies and advanced data analytics for water, gas and electric utilities to its portfolio of solutions. In more than 150 countries, we have strong, long-standing relationships with customers who know us for our powerful combination of leading product brands and applications expertise with a strong focus on developing comprehensive, sustainable solutions.

**For more information on how Xylem can help you, go to [www.xylem.com](http://www.xylem.com)**

We value your feedback. Please take our 3 question survey at **[bellgossett.com/survey](http://bellgossett.com/survey)** to let us know how we are doing.



Xylem Inc.  
8200 N. Austin Avenue  
Morton Grove, Illinois 60053  
Phone: (847) 966-3700  
Fax: (847) 965-8379  
[www.bellgossett.com](http://www.bellgossett.com)

Bell & Gossett is a trademark of Xylem Inc. or one of its subsidiaries.  
© 2017 Xylem Inc. CP-107-PL May 2017